

Activity Quiz 5

The Flow of Food: Purchasing, Receiving, and Storage



Name _____ Date _____

True or False?

- ① _____ You can store food in any durable container that you can cover.
- ② _____ Arrange stored food by its use-by date so that you use the oldest food first.
- ③ _____ You should reject a delivery of frozen steaks covered in ice crystals.
- ④ _____ Unwashed produce must be separated from ready-to-eat food.

Complete the Label

Use the information below to complete the food-storage label.

On Sunday, 8/3, you prepped melon balls at 2:00 p.m. You used some for a fruit salad and stored the rest. Make the label for the food you stored.

A circular food storage label template. At the top, it says "USE BY". Below that is a line for "Date". Underneath the date line are two checkboxes: one for "a.m." and one for "p.m.". Below the checkboxes are two blank lines for additional information.

USE BY
Date _____
 a.m.
 p.m.

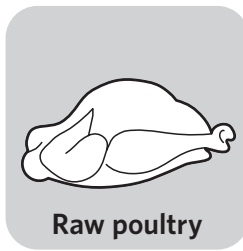
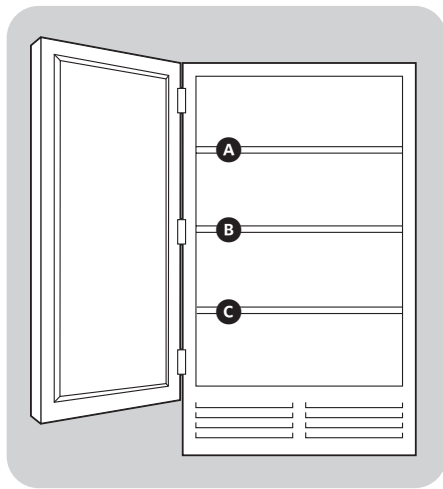
Fill in the Blank

Fill in the blank with the correct word.

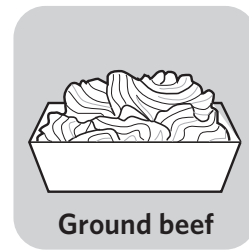
- ① Store food at least _____ inch(es) [_____ centimeter(s)] off the floor.
- ② Store raw meat, poultry, and seafood _____ ready-to-eat food.
- ③ Purchase food from _____, reputable suppliers.
- ④ Store ready-to-eat TCS food that is prepared on-site for no more than _____ days.

Store the Food

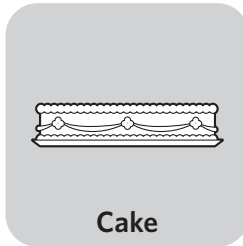
Next to the number of each food item, write the letter of the shelf it belongs on.



① _____



② _____



③ _____

Answer Key

True or False

- ① F
- ② T
- ③ T
- ④ T

Complete the Label

USE BY

Date 8/9

a.m.

2:00 p.m.

Melon Balls

Fill in the Blank

- ① six; fifteen
- ② below
- ③ approved
- ④ seven

Store the Food

- ① C
- ② B
- ③ A

